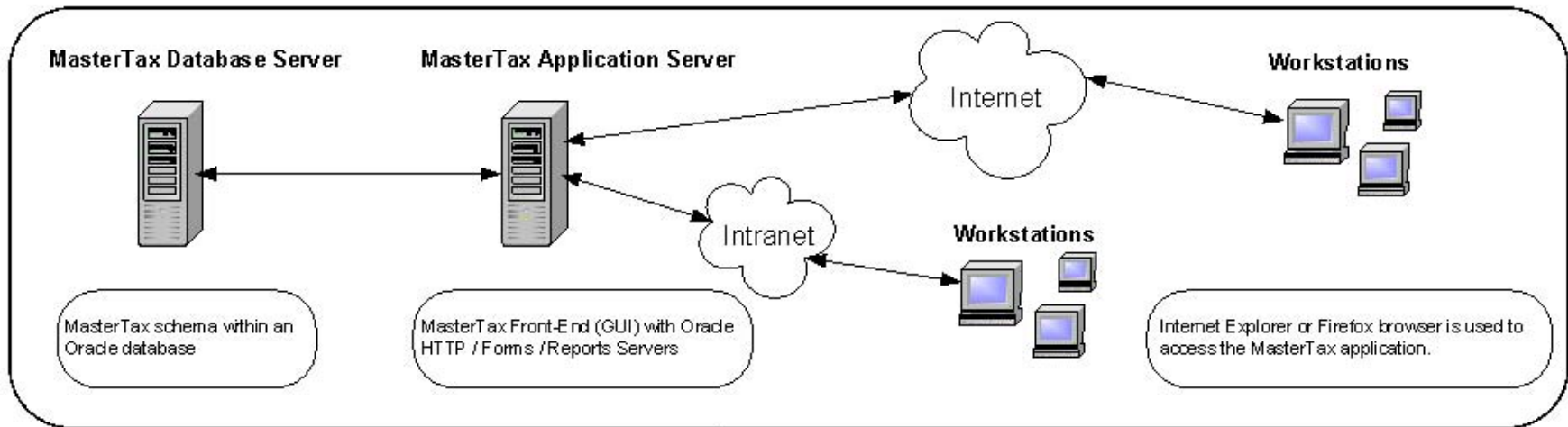


MasterTax Architecture



System Requirements

Oracle Database Server

- P4 Processor
- 2 GB RAM or more recommended
- 70 – 80 GB hard disk space (approximate growth = 1000 bytes per employee per quarter)
- Oracle Database Ver. 10g (see note below)
- Windows 2000 SP3 or higher service pack, or Windows Server 2003 SP1 or higher service pack, "Unix Like" OS*

Note: If purchasing Oracle through MasterTax, standard licensing is for Oracle Standard Edition One Database, which can be licensed only on a server capable of holding no more than 2 processors. Other server configurations will require additional Oracle licensing.

* Oracle database will run on the following Unix-like operating systems; MasterTax does not provide installation/configuration or maintenance support for the database on these operating systems:

Linux x86
Solaris
AIX
HP-LUX

Oracle Application Server

- P4 Processor
- 2 GB RAM or more recommended
- 30 - 40 GB hard disk space
- Oracle Application Server Forms and Reports Ver. 10.1.2.0.2 (see note below)
- Windows 2000 SP3 or higher service pack, or Windows Server 2003 SP1 or higher service pack

Note: This configuration assumes use of a single dual core processor. Other multi-core processors will require additional Oracle licensing.

Workstation

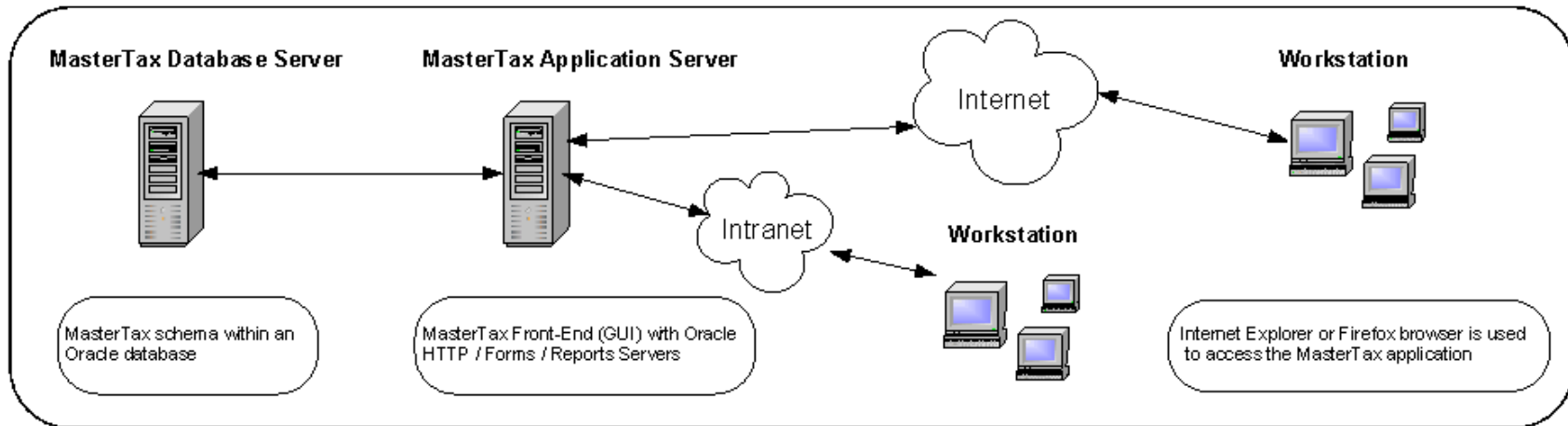
- P4 Processor or higher
- 1 GB RAM
- 15" or larger SVGA monitor; must support 800 X 600
- HP-compatible Laser Printer with duplex option and complete PCL4 or PCL5 font package
- Browsers Supported:
Internet Explorer 6, 7, and 8
Firefox 3

Note: Browsers must use one of the following:
Sun JRE 1.5.6
Sun JRE 1.5.11
Sun JRE 1.6.16
Oracle Jinitiator 1.3.1.30



"It knows the rules!"

MasterTax Architecture



System Configuration for Environments with FEIN Count Higher than 2,500 or Employee Count Higher than 150,000

System Requirements

Oracle Database Server

- Dual 64-bit processor
- 8 GB RAM or more recommended
- 70 – 80 GB multiple hard disk drives (approximate growth = 1000 bytes per employee per quarter)
- Oracle Database (64-bit) Ver. 10g
- Windows 2000 SP3 or higher service pack, or Windows Server 2003 (64-bit) SP1 or higher service pack

Note: If purchasing Oracle through MasterTax, standard licensing is for Oracle Standard Edition One Database, which can only be licensed on a server capable of holding no more than 2 processors. Other server configurations will require additional Oracle licensing.

* Oracle Database will run on the following Unix-like operating systems; MasterTax does not provide installation/configuration or maintenance support for the database on these operating systems:

Linux x86
Solaris
AIX
HP-UX

Oracle Application Server

- Dual processor
- 4 GB RAM or more recommended
- 30 - 40 GB hard disk space
- Oracle Application Server Forms and Reports Ver. 10.1.2.0.2
- Windows 2000 SP3 or higher service pack, or Windows Server 2003 SP1 or higher service pack

Note: This configuration assumes use of a single dual core processor. Other multi-core processors will require additional Oracle licensing.

Workstation

- P4 processor or higher
- 1 GB RAM
- 15" or larger SVGA monitor; must support 800 X 600
- HP-compatible Laser Printer with duplex option and complete PCL4 or PCL5 font package
- Windows XP, Windows Vista, Windows 7
- Browsers Supported:
Internet Explorer 6 and 7
Firefox 3

Note: Browsers must use one of the following:
Sun JRE 1.5.6
Sun JRE 1.5.11
Sun JRE 1.6.16
Oracle Jinitiator 1.3.1.30.